



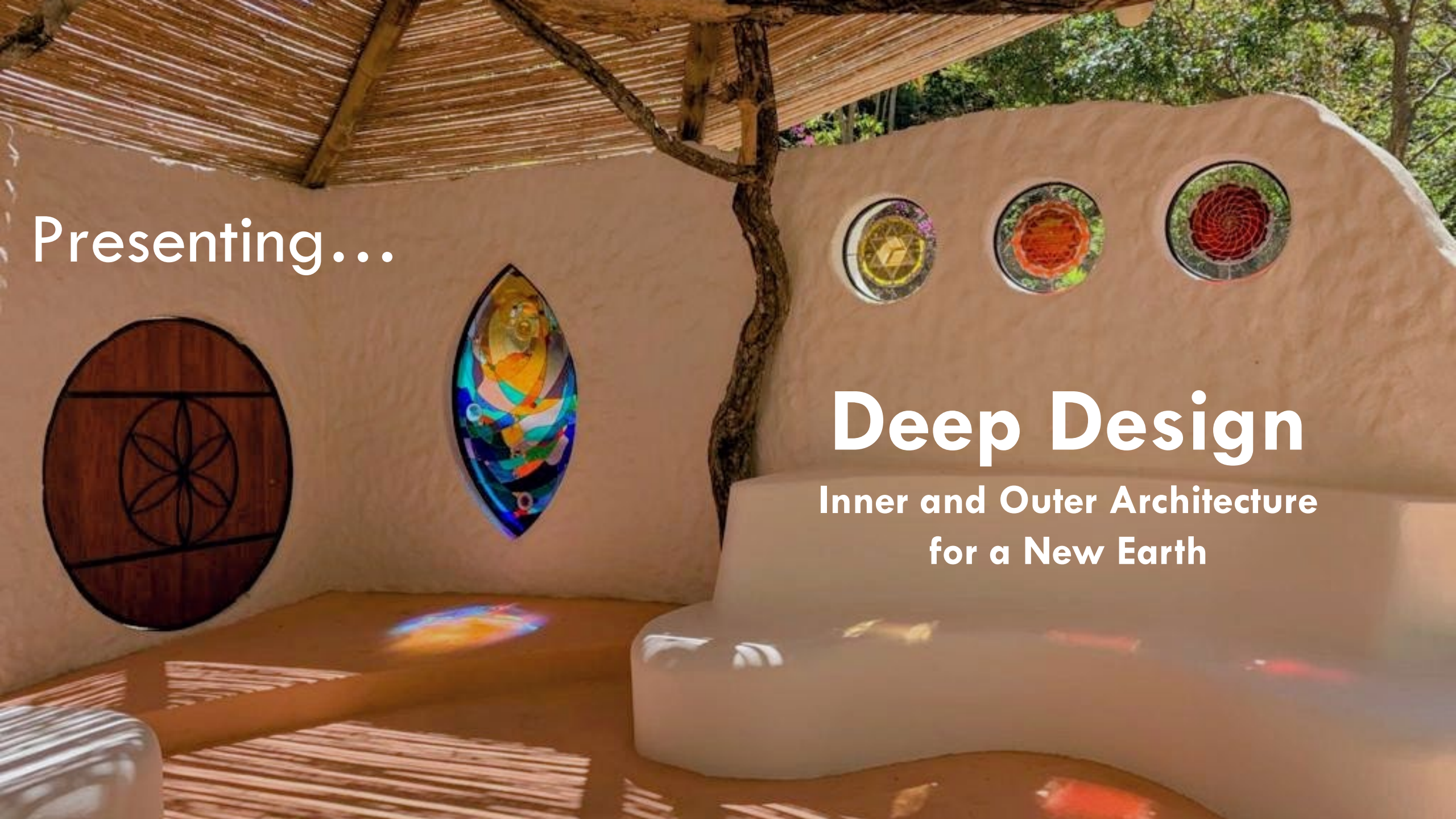
**STUDIO SANADORA**

Regenerative Culture & Design

Presenting...

# Deep Design

Inner and Outer Architecture  
for a New Earth







# ARCHITECTS ARE THE POETS OF CULTURE

We practice integral, human-centered, place-based design for planetary regeneration.

# COMPANY PURPOSE

1. A new kind of design for a new humanity, integral **solutions** to global challenges
2. Sustainable community development through **sacred architecture** and **geodesign**
3. Creating a culture of **connection** through cross-disciplinary collaboration

*Transforming the way people see the world, enabling global citizens to act together, changing how we design and manage our society, catalyzing collective evolution, generating impact at scale to confront climate change and major collective challenges*

# PROBLEMS

1. **Polarization** makes us forget we are all one
2. **Scarcity** mindset normalizes greed and violence
3. **Fragmentation** makes duplication and disconnection
4. **Antiquated infrastructure** and technology limits our capacity
5. **Ignorance** of new technologies and best practices keeps us stuck

*Absence of design science education even though “Everyone who devises courses of action to turn an existing situation into a preferred one, is a designer.”*



# SOLUTIONS

*Studio Sanadora is a full-service consultancy which supports organizations, institutions, leaders, and the communities they serve to become regenerative and sustainable.*

1. Mapping & needs assessment
2. Master planning & conceptual design
3. Geodesign & facilitated collaboration
4. 3D parametric modeling, GIS & Web 3.0
5. Capacity-building & education





# WHY NOW?



Innovation which inspires togetherness can **heal a world in crisis**; technology alone won't change the world, we are leading a shift in consciousness.

1. **Resource management:** Planetary systems are beyond carrying capacity
2. **Transparency:** Good governance requires good data and useful information
3. **Visibility:** Regenerative solutions and resources are available but hard to find
4. **Direction:** Goals are clear but insights are needed for efficiency and impact
5. **Holism:** Large scale initiatives are complex and require advanced coordination

# MARKET POTENTIAL

- Business is the swing factor in achieving the SDGs
  - Private sector = 60% global GDP
- Architecture
  - 2021 = \$345 billion
  - 2028 = \$474 billion
- **Smart Cities**
  - 2021 = \$112 billion
  - 2028 = \$676 billion
- Green Bonds & Loans
  - Over \$5 billion issued per day





# WHO WE ARE



**We stand for social justice** in the post-anthropocene paradigm of the open heart, centering kindness, tolerance, and inclusion.

**We give permission to take up space** by embodying our highest selves in each moment, cultivating sovereignty, awareness, and alignment.

**We honor deep wisdom** especially in the practices of our elders and indigenous medicine keepers, being truthful and bold in our practice of impeccability.

**We are present**, offering compassion in response to suffering, generating consciousness which sparks the evolution of our human potential.

**We are grounded** in natural cycles and rhythms of life, trusting in Natural Law and mindful of our interbeing with all that is.

# OUR VISION

- Multidisciplinary co-creation
- People, planet, profit, **place**
- The antidote is to relate
- Think global, act local – a new humanity
- All engineering problems have a social layer
- Intersectional, integral, holistic
- Mindful peace-building







# PLANETARY REGENERATION SYSTEM

A World That Loves Itself



Introducing...



**HOMEdash**

See the Heartbeat of Mother Earth

Supported By



# HOMEdash

HOMEdash is a unified whole systems map of Planet Earth, helping you see the

**H**earbeat

**O**f

**M**other

**E**arth

By...

- **measuring** the regeneration of planetary systems,
- **motivating** positive peaceful action through gamification, and
- **mobilizing** a global network of people to solve collective challenges.





# PLANETARY OPERATING SYSTEM

HOMEdash empowers **bold action** so that water protectors, permaculturists, medicine keepers, and conscious creators have the information we need to birth a New Earth.

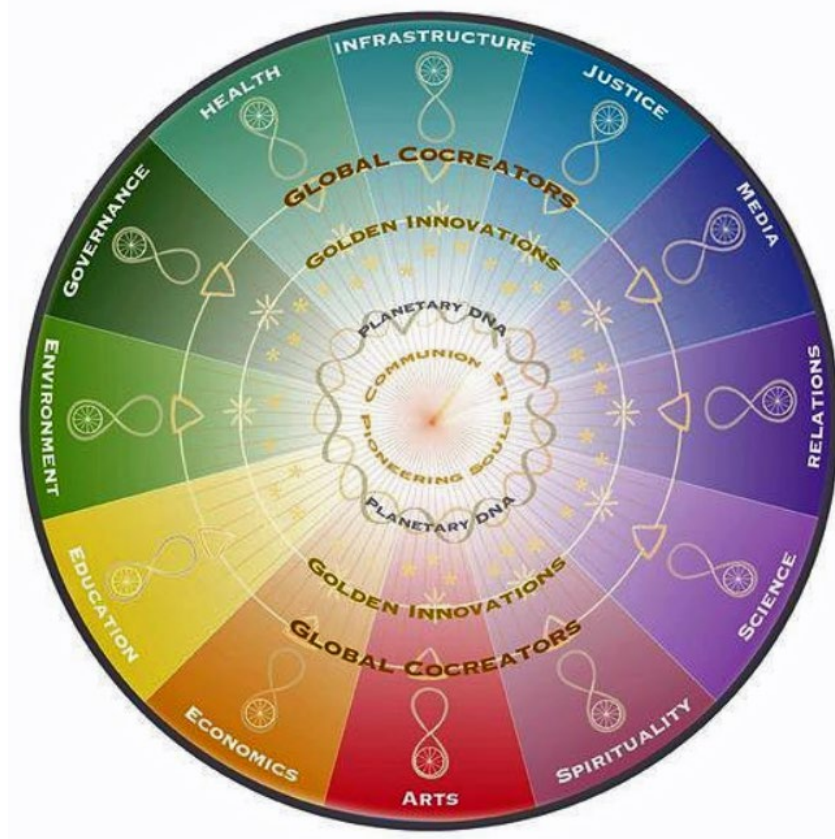
HOMEdash empowers **deep listening and mindfulness** of our Earth's carrying capacity so that we can cultivate a society which is based on balance, harmony, and the regenerative use of our natural resources.





# CATALYZING COLLECTIVE EVOLUTION

It's a tool for co-creation inspired by visionaries like Barbara Marx Hubbard.



*Our crisis is a birth...  
The impulse of evolution...  
Toward a planetary awakening.*

# INTEGRAL INTERFACE

It's integral, guided by  
pioneers like Ken Wilber.

*Public and private...  
People and planet...  
Breaking barriers to peace.*

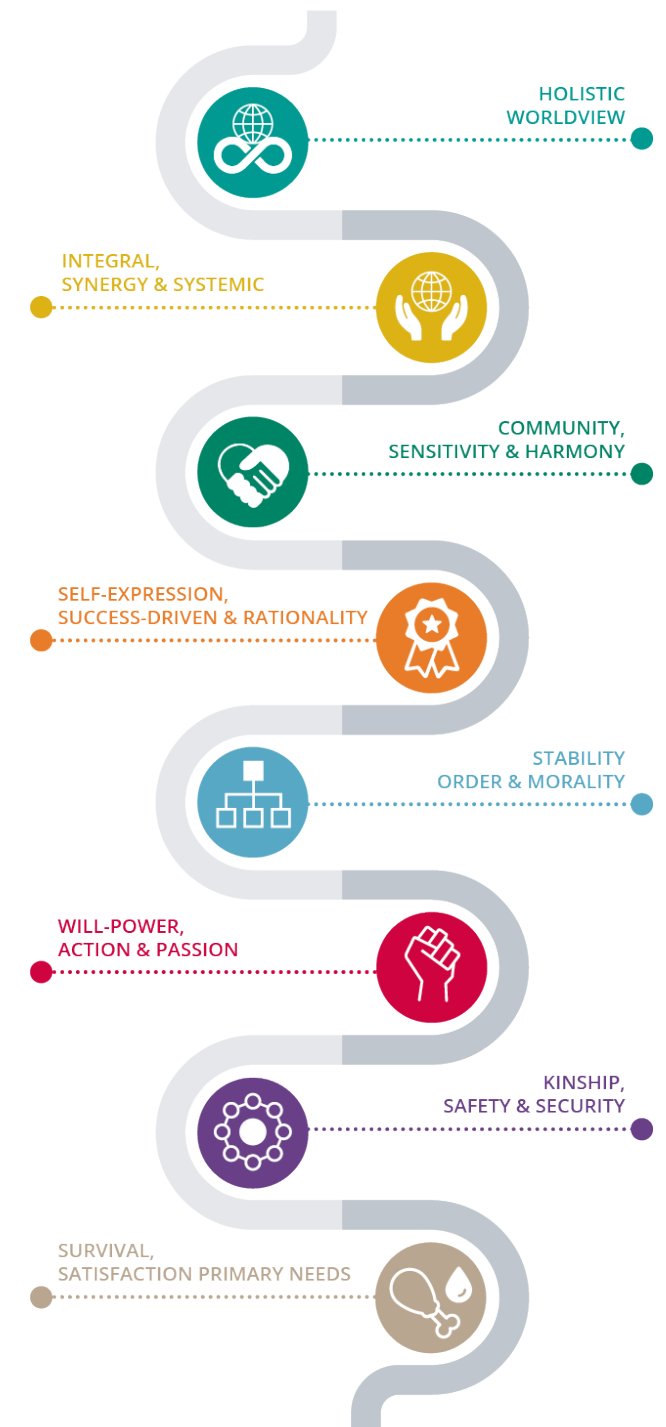
## HOMEdash Features

Individual  
Sustainability  
**Values**  
Customizable  
Interface

Individual  
Sustainability  
**Actions**  
Impact  
Tracker

Collective  
Sustainability  
**Culture**  
Storytelling  
Platform

Collective  
Sustainability  
**System**  
2030 SDG  
Tracker



# AN EMERGENT APPROACH

Blending Sharif Abdullah's **12 Global Challenges** with Barbara Marx Hubbard's **12 Sectors**.

Challenges		Sectors	
Habitat	<b>Phase One: Synergy</b>	Arts	
Energy		Science	
Water		Infrastructure	
Food		Justice	
Security	<b>Phase Two: Alignment</b>	Relations	
Politics		Governance	
Ecology		Environment	
Economics	<b>Phase Three: Agreement</b>	Economics	
Health		Health	
Education		Education	
Media		Media	
Cultural		Spirituality	



# OUR APPROACH TO DESIGNING A NEW EARTH

- Intersectional social, ecological, economic (etc.) justice, working at the center
- Empowering solutions in the most challenging areas, the ones we find hardest to define
- To solve a problem, first define it well
- Guide the global dialogue in contentious spaces, reach leaders with expert data
- Focus on transmitting most critical solutions
- **Show** the value of making informed decisions to achieve world peace
- **Tell** stories about hard-to-understand aspects of integral i.e. sustainable development



ART

SCIENCE

INFRASTRUCTURE

JUSTICE

ENVIRONMENT

GOVERNANCE

RELATIONS

ECONOMICS

EDUCATION

HEALTH

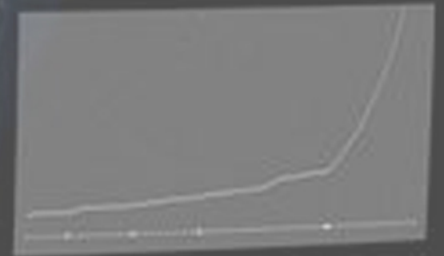
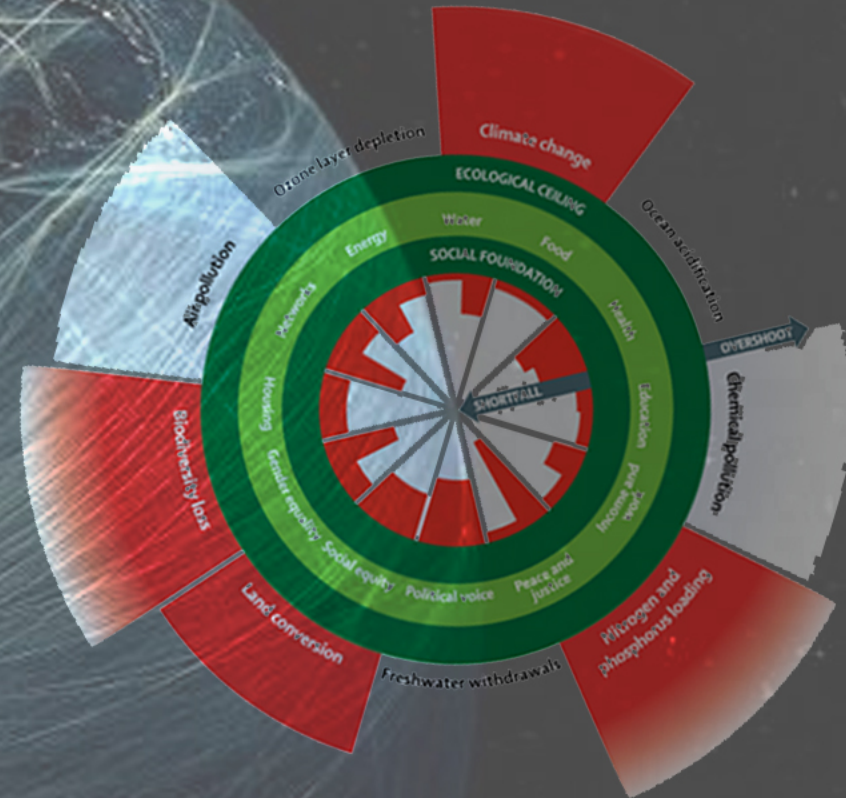
MEDIA

SPIRITUALITY



# TROPICAL FOREST LOSS

Search...

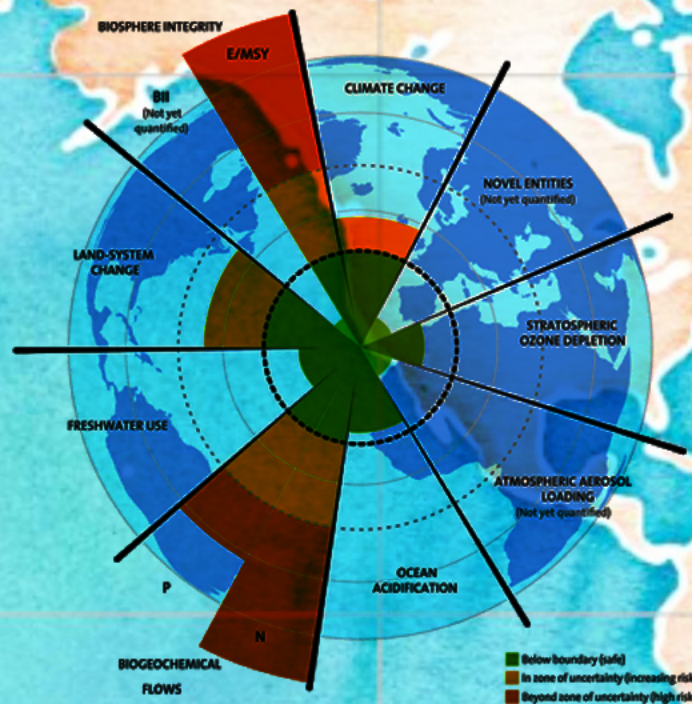




Search...



■ Beyond the boundary  
□ Boundary not quantified



Water Systems

Food Systems

Energy Systems

Security Systems

Political systems

Economic Systems

Social Systems

Education Systems

Communication Systems

Health Systems

Habitat

Ecological Systems

BIOSPHERE

WATER

FOOD

FUEL

CRIME

DEVELOPMENT GOALS

ECONOMY

FAMILIES & SOCIETY

EDUCATION

TELECOM

PUBLIC HEALTH

TRANSIT

ART

WASTE

WASTE

DEVELOPMENT GOALS

CRIME

FUEL

FOOD

WATER





## Contact

Veronica Anderson

[vero@veronicasanadora.com](mailto:vero@veronicasanadora.com)  
or visit [studiosanadora.com](http://studiosanadora.com)

