

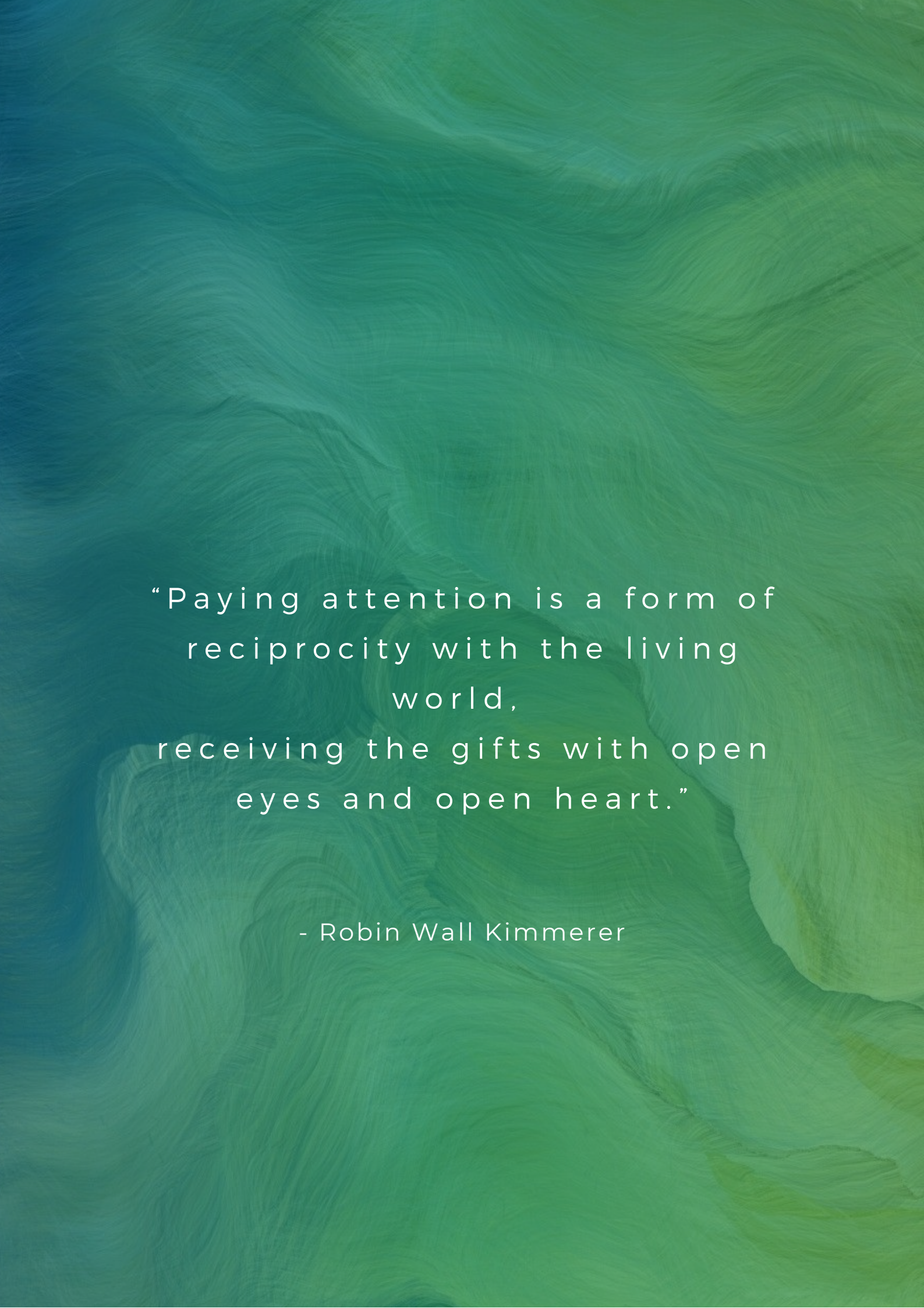
2020- 2023

A background image of dandelion seeds floating in the air, rendered in a light green and white color scheme.

Born Global Foundation Impact Report

www.bornglobalfoundation.org





“Paying attention is a form of
reciprocity with the living
world,
receiving the gifts with open
eyes and open heart.”

- Robin Wall Kimmerer

OUR NORTH STAR

Regen in One Gen

Welcome to our Impact Report 2020-2023. We started our collaboration with Boston University with our first Sustainability Coopetition in 2019. The 2020 pandemic led us to adapt quickly, transitioning 133 students to an online summer internship, a program that has thrived since. Our shared endeavors took us to the World Biodiversity Forum in Davos, the initiation of international internships in South Africa and Lebanon, and the establishment of two innovative companies co-founded with BU students.

As we brace for the next wave of exponential growth, we pause to spotlight transformative stories from our five-year collaboration with BU, underscoring our shared commitment to supporting the heart of our mission: **Regeneration in One Generation**. And here's how we are doing it...

Ecology: We embrace an interconnected view of the world as unified biomes, rather than artificial borders and foster earth-honoring perspectives and practices. A deep faith in the wisdom of nature expands the boundaries from the classroom to worldviews practice.

Education: Central to our ethos is the integration of biomimicry principles. We teach students to observe and learn from nature's solutions and apply them to complex global challenges. Through internships, coopetitions, and research projects, students acquire hands-on expertise.

Entrepreneurship: We cultivate entrepreneurial skills including adaptability, resilience, critical thinking, creative problem-solving, and effective communication needed to seize new career paths.

We hope you enjoy a slice of the Born Global journey we have been on with Boston University, and I want to express our deepest gratitude to all of our Born Global Terriers – the amazing students, dedicated professors, and supportive financial partners. They say it takes a village, but we believe a global community is more effective. Together, we really can create a lasting impact on the lives of this next generation and their ability to actually achieve regeneration of our shared home.



KIMBERLY SAMAHA
CEO Born Global Foundation

Table of
Contents

01. Born Global & BU

Pages 6-13

02. College of Engineering

Pages 14-22

03. Questrom School of Business

Pages 23-26

04. College of Communication

Pages 27-31

05. Pardee School of Global Studies

Pages 32-35

The background of the entire page is a close-up, high-resolution photograph of a green leaf. The leaf's veins are clearly visible, creating a complex, organic pattern of lines and shapes. The color is a vibrant, slightly dark green, with some areas appearing darker due to shadows and others lighter where the veins are more prominent. The overall texture is natural and detailed.

Collaboration
Born Global x BU

BORN GLOBAL

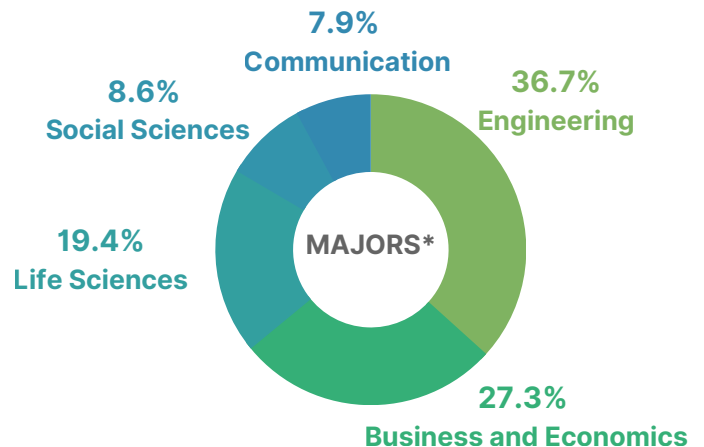
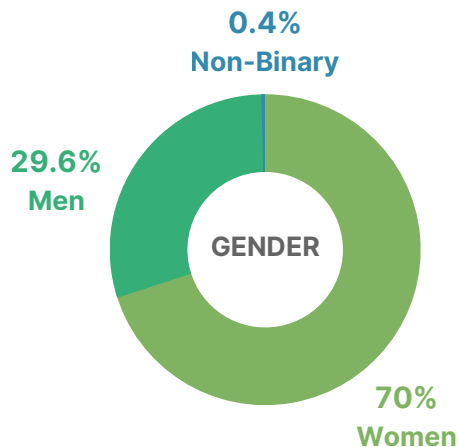
Our Involvement at a Glance

We exist to innovate systems in a way that emulates the natural world's genius so that we collectively bring solutions to the world's largest challenges.

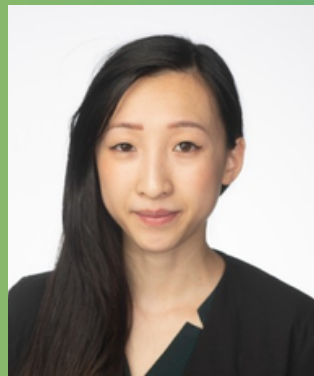
VALUES

- Ecology
- Education
- Employment
- Regeneration in One Generation
- Biomes Not Borders

We are a non-profit organization which works within an ecology of service and flow - not one of ownership. We offer internships, online courses, and programs to teach the world about the beauty of biomimicry and bio-philic design.



Research that Matters



“Tackling the problems associated with climate change is something that is very near and dear to me, as well as being proactive and looking for solutions. I feel that is something we explored while I was an intern at Born Global. We looked at very real solutions.”

BELLE HE (ENG'21)

Environmental Strategist So Cal Edison, MS Materials Engineering-BU
BA- Psychology UCLA, Biomimicry Intern & Mentor 2020-2021

Our students complete their research in interdisciplinary teams, ensuring that challenges are examined from a rich variety of perspectives and backgrounds. Our projects address real world issues and range in topic from philosophy and environmental law to mechanical engineering and marine science.

“... When I was working on my project in energy storage, we talked to actual companies about emerging technologies that we thought sounded promising and that we wanted to incorporate in our sites.”

- Belle He

2020

Belle began researching as an intern.

2021

Belle started mentoring high school interns.

2021

Belle presented her research at the World Biodiversity Forum.

BU STRATEGIC PRIORITIES

A Vibrant Academic Experience

With over 30 countries represented, Born Global invites students of all academic backgrounds to engage in multidisciplinary experiences to better prepare them for the rapidly changing job market. With an intern to mentor ratio of 5 to 1, students develop deep relationships with seasoned professionals and each other.



left: Millie Benkert (COM) and Benjamin Baah (QST)

right: Transformations Systems Thinking Conference- Portland Maine

"I am convinced the knowledge I have obtained will be extremely beneficial in the change I seek to make in my future career and within my environment... The work being done at Born Global is amazing, and I look forward to supporting in whatever capacity I can when I am called upon in the future."



BENJAMIN BAAH (MBA'24)

Retail Operations Manager, Access Bank, Ghana
Regenerative Finance Intern 2023

Diversity Equity & Inclusion



“Being half Lakota Sioux, I am always eager to have the chance to incorporate Indigenous thought into my work, especially when I work on philosophy and ethics projects. Born Global presented me with an abundance of opportunities to grow my confidence in doing just that: blending my personal experience with my professional ambitions.”

DEE EVERETT (CAS'24)

Neuroscience and Philosophy Senior
Bioregionalism and Biomimicry Intern 2020-2023

Students like Dee and Ethan, have been incorporating lessons in indigenous wisdom and earth-honoring cultures through our Eco-Ethics program. Utilizing Robin Wall Kimmerer’s Braiding Sweetgrass, our whole community meets weekly to discuss a chapter and then directly implement the wisdom into their internship projects. It is our Life’s Principle of Integrating Development with Growth through using feedback cycles of contemplation and action.

“... because of the interdisciplinary and multicultural nature of the Born Global team, I was constantly exposed to new ideas and perspectives. By helping to facilitate some of the discussions on Braiding Sweetgrass, along with taking courses on biomimicry and systems thinking, I’ve walked away from this internship with a deeper sense of gratitude for nature and an appreciation for what it has to teach us.”



ETHAN THWAITES (CAS'22)

Management Consulting Analyst at Point B Consulting
Environment and Business Philosophy Intern 2020-2021
Karbank Award recipient

Community, Big yet Small

With summer internship cohorts as large as 100+, students building community with in-person gatherings is a high priority. Through our partnership with the Isabella Gardner Museum, we come together in an urban garden paradise for brunches, wine tastings and private events and tours, to gain shared inspiration.

ISABELLA SEWART GARDNER MUSEUM



Dr. Samaha and her husband Fahim joined by BU faculty and staff - Richard Steubi (QST), Noora Lori (Pardee), Caterina Scaramelli (CAS), Emily Ryan (ENG), Rabbi Jevin Eagle (QST), Dana Clancy (CFA) - at the Isabella Stewart Gardner Museum for our Tea and a Tour event in March 2023.

Global Engagement



"I feel like my biggest accomplishment with this whole entire project was making great connections with the people I was working with."

ALANNAH JOHNSON (ASU'23)

MS Biomimicry, Mycology Intern and Mentor 2023



Born Global interns and mentors represent 30+ countries. Our Mangroves project team, specifically, was made up of 12 students from 6 countries.

Their research focused on using the growth of Slime Mold to map out sustainable water systems in Dubai and using the natural design of a Mangrove to create a desalination filter that could be used throughout the MENA region.

Image: Alannah with slime mold she cultivated.

"The Born Global experience taught me the value of flexibility and overcoming unanticipated obstacles, as evidenced by my 'Evolve to Survive' Champion Organism Award."



VITTORIA SAMA (ENG'25)

Biomedical Engineering Junior
Coopetition Winner and Computational Modeling Intern 2023

PARTNERSHIPS

Yawkey Nonprofit Scholarships

The Yawkey Foundation's gift to Boston University is the first permanent fund supporting student internships and focuses on unpaid internships at nonprofit organizations. Yawkey has partnered with Born Global since 2020 with a 95% success rate of our applicants receiving full scholarships for their internships.



"During my time with Born Global, I gained a lot of confidence in myself. During the internship, we had a lot of leadership, but it was also very open-ended. Students were able to direct the teams and the projects whichever way we saw fit. I also learned to trust my knowledge."



JUAN ARANGO (ENG'21)

Sales Engineer at CarbonQuest, Yawkey Nonprofit Scholar Sustainability Intern and Student Project Manager 2020-2021



"Getting to learn more about biomimicry and expand on my passion for communication with other like-minded people was just an amazing experience."

ANNA MITCHELL (COM'25)

Public Relations Junior, Yawkey Nonprofit Scholar Communications and Experiential Learning Intern 2023




College of
Engineering

Sustainability Coopetition

The Born Global Foundation, in partnership with the Boston University College of Engineering and the Institute for Sustainable Energy, is hosting the 5th annual Born Global Foundation Coopetition for Innovation in Sustainability.

The Coopetition is open to all Boston University students - both at the undergraduate and graduate level - and submissions must come from interdisciplinary teams spanning the different colleges at BU.

Our annual **\$10K pledge** allows for winning teams to receive cash prizes and continue their work with Born Global as summer interns.

- 
- Interdisciplinary Teams:** Students from various disciplines, such as biology, engineering, design, and business form interdisciplinary teams.
 - Sustainability Challenge Identification:** The student teams identify specific sustainability challenges based on the UN Sustainable Development Goals.
 - Research and Biomimicry Methods:** Teams conduct extensive research on natural systems and organisms then apply them to real-world applications.
 - Mentorship and Guidance:** Experts in biomimicry and sustainability guide students in applying biomimicry principles effectively.
 - Iterative Design Process:** Students learn to innovate in an iterative design process, to develop prototypes, models, or functional solutions
 - Evaluation and Scaling:** Teams showcase their solutions for expert evaluation of their effectiveness, feasibility, and potential for scaling.

Urban Environments



“While working with Born Global as the student coordinator for the coopetition, I had the opportunity to witness just how incredibly innovative my generation can be, as well as just how driven they are to create positive change.”

CATHY CHENG (ENG'23)

Harvard PhD candidate in Materials Science, Mechanical Engineering, Coopetition Winner, Biomimicry Intern at Born Global 2020-2023

Two Freshman Cathy Cheng (ENG) and Lekhya Sathi (SAR) won the top prize with their redesign of the Warren Towers Dormitory as a food and biomass growing facility using algae and photobioreactors.

The systems would be fed with nitrogen rich filtered wastewater that then becomes fertilizer to produce food in vertical growing systems inside the dorm, providing fresh salads to the students.

Cathy continued working as an intern and Program Coordinator for the Coopetition for her full 4 years as a Kilichand Honors and Engineering student at BU. Her work continued to evolve in the areas of sustainability.

This fall, she will start her PhD at Harvard University in Mechanical Engineering and Material Science.

Image (right): Algae and photobioreactor panels.



Societal Engineers

Drawing inspiration from spider webs, fungi, and the Namibian desert beetle, the Bio-Tower team design would sequester water from fog and dew in Morocco. Women in the community would handle both the construction and operations, elevating their daily lives from finding water to harvesting water.

A true example of a Societal Engineer, John Loftus interned in 2020 then went on to win the Coopetition that year. His research focused carbon capture and learned rapid prototyping, and modeling or solutions including algae bioreactors, fly ash concrete, filters, and natural sequestration. John now works at Factorial Energy in Boston as a Sr. Process Engineer in next gen battery technology.

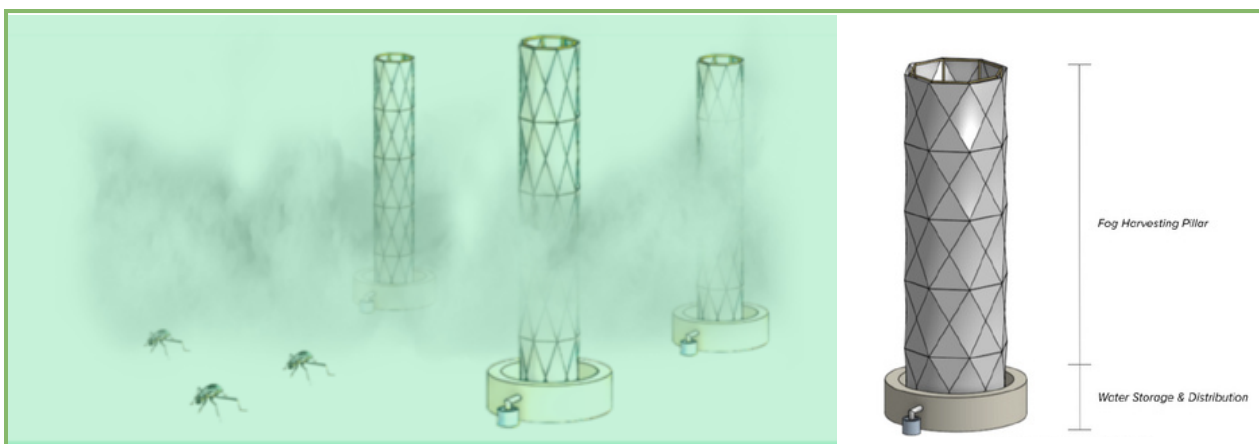


Image: Biotower design ([link](#))

“ I will always value the connections I made and the unprecedented lens of biomimicry that I learned to see the world through. The connection to the expansive community of researchers and activists committed to developing tech for a sustainable future gave me a unique chance to reevaluate my conception of what it means to be a Societal Engineer. ”



JOHN LOFTUS (ENG'21)

Senior Process Engineer at Factorial Energy
Coopetition Winner, Biomimicry Intern 2020

Highschool Outreach



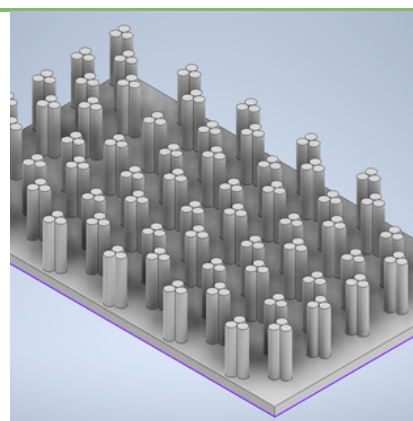
“We are all interconnected. My journey as a Born Global Biomimic connected me to my sense of being a global citizen in ways I never would have imagined -such as Capoeira, Afro-Brazilian martial art and dance, which has connected me to the nonprofit Bantu Institute in Brazil.”

EMILY DUNN (DUKE’25) WITH BELLE HE (ENG LEAP ‘21)

Engineering & Physics, Coopetition Winner, Engineering Intern 2021

The 2020 Artificial Leaf team was an all female team that included 2 young women from our high school outreach program, which seeks to give opportunities to students from under-resourced schools. The leaf is a photoelectrolytic cell of semiconductor, catalysts that when placed in water and exposed to sunlight, undergoes hydrogen and oxygen evolution reactions, producing hydrogen gas.

Emily continued with Born Global working on the Hydrogen Hive project with Belle He (ENG 21- LEAP) and highschool students from Lebanon. The team presented in Davos, where Emily was able to attend her first opera in Zurich. Now as a resident of Duke’s Smart House, Emily was elected to project manage the first artificial leaf prototype to provide hydrogen electricity for her dorm.



left: Emily and BG team at the Opera in Zurich. ; *right:* photoelectrolytic cell

COOPETITION FEATURE 2022

It's Natural. Period.

Our focus on gender equality combined with our outreach to young women has meant that important topics, such as period poverty, that have largely gone unresearched in male-dominated programs, are given the platform they deserve.

“It's Natural. Period” tackles the issue of period poverty through applying biomimicry methodology to develop menstrual products which are entirely environmentally friendly (from the product itself to its packaging). The team envisions that the profits of this endeavor will be used to fund the donation of menstrual products to less developed countries.



Pictured (left to right): Cathy Cheng (student coordinator and Born Global intern), Dr. Emily Ryan (BU Assistant Professor of Mechanical Engineering), Dr. Kimberly Samaha, Nash Elder, Allison Weber, Anant Pathak, and Dean Kenneth Lutchen (BU Dean of College of Engineering)

“Born Global gave me the opportunity to dive into a topic regarded as ‘taboo’ and, in some countries, ‘shameful,’ while allowing me to not only educate myself but others in the process.”



ALLISON WEBER (ENG'23)

Coopetition Winner
Senior Program Manager at Shark Ninja

COOPETITION FEATURE 2023

Slime Mold & Shark Subs



“Working in a multidisciplinary team and delving headfirst into biomimicry was an exciting challenge. The vast, boundless inspiration from nature left us struggling to figure out where to begin. But once my team found our direction, it was as though a new world had opened before us.”

JOSH KORB (ENG'25)

Coopetition Winner, Computational Modeling Intern 2023

In spring 2023, we selected two winning teams. One team created an algorithm based on the natural growth of slime mold to map out sustainable waterways for under-resourced villages in Mozambique. The other team explored sustainable and efficient maritime shipping solutions by applying the aerodynamic properties of shark skin to autonomous submersible shipping containers.



Pictured (left to right): Vittoria Sama (ENG), Cathy Cheng (ENG), Nicole Lubaczewska (QST), Oscar Simón Valbuena (ENG), Helena Bofise (COM), Dr. Kimberly Samaha, Christopher Lambert (ENG), Josh Korb (ENG), and Dean Kenneth Lutchen (BU Dean of College of Engineering)

LEAP FEATURE INTERNS

Degrees to Jobs



“I was on the path of this big change. I started off in finance and then changed to engineering, so I was on this path of changing my hard skills. I think Born Global introduced me to a whole new source of knowledge through not only its mission, but also its physical sites, like the power plants.”

JAMES NELSON (ENG'20)

Mechanical Engineer at RMF Engineering, MS Mechanical Engineering - BU
BBA Finance - Temple University, Techo-economic Modeling Intern 2020

For over 30 years, the Late Entry Accelerated Program (LEAP) has made it possible for students with non-engineering backgrounds to obtain a master's degree in engineering. LEAP students are typically between the ages of 25 and 35 with undergraduate degrees in diverse fields including business, education, English, fine arts, music, natural sciences and psychology. This interdisciplinary approach is a perfect fit for our Master Level interns to directly apply their learning to best situate them for immediate employment after their degree.

Joanna joined Born Global in Fall 2020 and stayed on for 4 trimesters working on our LCA (Life Cycle Analysis) team. She was partnered with a Biomimicry Mentor and received 3 certifications as a Biomimicry Practitioner. This led to her current position as a Carbon Analyst at a consulting firm in California.



JOANNA THELEN (ENG'21)

Carbon Analyst at Rincon Consultants, MS Mechanical Engineering - BU
Washtenaw Community College Pre-engineering, LCA Intern 2020-2021

Entrepreneurship Pathways

“Born Global marked the pivotal beginning of my career journey. It didn't confine me to predetermined expectations; it fostered an environment where I could craft my own solutions through invaluable support and resources. I carried forward a profound sense of agency in my ability to effect change in the world one step at a time.”



KELLY WANG (ENG'23)

Product Designer NextGen Healthcare, BU MS Computer Engineering
Hewitt Pathfinder Fund, Biomimicry Intern 2020-2022



Summer
internship AG



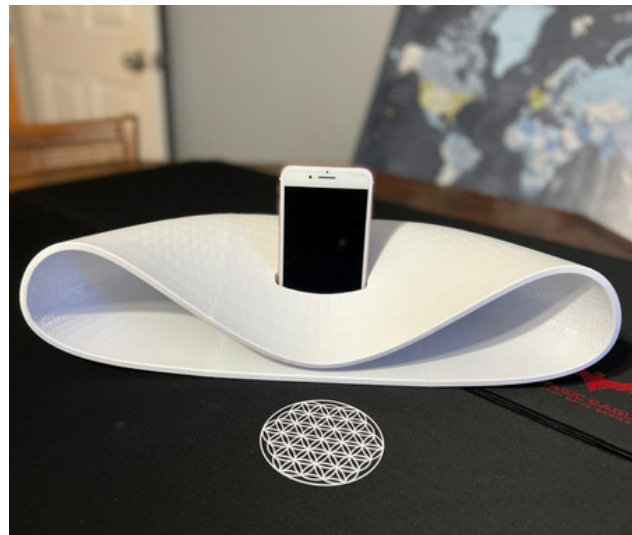
Sr. Project
HOME DASH



Hewitt Pathfinder
Entrepreneur
Scholarship

Kelly started with BG on our interactive game Alchemist Garden, then did her Sr. Project designing a 'widget' to calculate CO2 emissions and was awarded a scholarship to work on Super Plants start-up in conjunction with students at Babson College. They presented their prototype at WBF Davos in 2022.

Image: Superplant prototype- Davos



Questrom School of
Business

Athena Power Holdings



"The connections I made through Born Global went beyond zoom screens and LinkedIn connections and transformed into true, lasting friendships."

JULIETTE STOKES (PARDEE'23)

Sciences Po Masters candidate in International Sustainable Business Management
Regenerative Finance Intern 2023



Professor Richard Stuebi's Consulting practicum is open to students across BU schools, and this team of 2 undergraduates Juliette Stokes and Tali Phillips (QST'25) created a compelling case for how the business plan of restoring distressed industrial assets by emulating nature's process of symbiosis.

"One of my favorite parts about my time at Born Global was how it facilitated connections. My work at BG connected parts of my studies that sometimes felt distant - such as international relations, business, and environmental sciences - but it did not stop there. Born Global connected me to colleagues, mentors and friends that came from across the globe and across all fields and backgrounds." - Juliette Stokes

Image (left): Interns at the Transformations Conference. Back row (left to right): Caroline Heyburn (American U), Millie Benkert (COM), Anna Mitchell (COM) Front row: Juliette Stokes (Pardee)

MBA STRATEGY IMPLEMENTATION,

Artemis Carbon Futures

“This opportunity, which may appear atypical for the MBA student, resulted in a significant, hands-on experience in implementing strategy, technology, and finance all while significantly resource constrained. The challenge, comradery and impact are aspects of my time that I will forever cherish.”



ADARSH GHOSH (MBA'23)

Nuclear Submarine Officer- US Navy
Naval Academy - Economics & Nuclear Engineering

“Reflecting on my tenure with Born Global, I am reminded of the foundational principles that have always been central to my identity. Hailing from a lineage where the ethos of 'service before self' is paramount, this ideology not only shaped my essence but also that of my siblings, guiding my professional trajectories.

Born Global Foundation offered me an exceptional canvas to intertwine next-gen tech, such as LLMs, AI, Blockchain, and Data modeling, with the profound philosophy of biomimicry. This confluence facilitated my continued journey in service and empowered me to architect solutions that make an impact.” - Adarsh Ghosh



Image: MIT Sustainability Summit with BU interns and BG professionals

Ecological Ethics



“My Born Global internship provided me with real-world knowledge in the field of Eco-ethics by reshaping my perspective on ethical investments. I was able to see the tangible impact of our work in shaping a more sustainable and ethical future.”

TIA TRANG VU (COM '23)

Current Strategic Communication Intern at Johnson & Johnson
Business Ethics Research Intern 2023

Dr. Samaha's years as an Adjunct Professor at AUB in Business Ethics led to the formation of the Beirut Ethics Colloquium in 2014. A shared mission with the Susilo Institute's research is the conviction that global business leaders can promote and realize social good. Projects have included:

Braiding Sweetgrass: Applied Eco-Literacy

Bordeaux Colloquiums: Conference Structure, Speakers & Content

Earth Dragon Fund: Financial Fund based on Nature-Based Solutions

“The BG internship helped me build a better understanding of archetypes of dragons in West & East as related to our evolving human ethics. It provided me with a completely new perspective for my future work and practice eco-ethics to deliver earth-honoring ethos!”



TIANDU PU (COM'23)

MS Marketing Communication Research
Business Ethics Research Intern 2023



College of
Communication

Career Stepping Stones



“During a Q&A session for Born Global interns, Dr. Caterina Scaremelli (CAS) was asked, ‘how do you decide what to do for a living?’ She answered, ‘Do what makes your soul shake.’ During my time with Born Global, I have not only felt my soul shake, but I have also felt it shout out with joy.”

LIZ MCCARTHY (COM'22, PARDEE'22)

Born Global Internship Program Director, Communication and Social Impact Intern 2020-2021

I came to BU with a narrow career mindset until Dr. Arunima Krishna (COM) advised me to “keep an open mind” and consider **broadening my horizons**. In 2020, I took these words to heart and applied to intern with Born Global. I had almost zero professional experience. However, Dr. Samaha took a chance on me, and I worked on the Impossible Lebanon Challenge, an innovation competition that empowered Lebanese high school students to become community changemakers.

My BG professional experience led to internships with the **US State Department** and the **Wilson Center**. I rejoined Born Global last year as the Internship Program Director, and this January, I will be joining the **EPA's** Boston Office as a Community Involvement Coordinator. My future supervisor specifically cited my experience with Born Global as a reason for why he thought that I would be a “great fit” for the role.

I came from a Title I high school and grew up in a very working class family, and I feel that I owe my career to Born Global and Dr. Samaha. When students have asked me, “how do I start my career?” I tell them, “you just need one person to take a chance on you, to see your raw potential.” For me, that person was Dr. Samaha, and as I continue my career, **I want to be that person for the next generation of young changemakers.**

Effective Storytelling

Born Global's social media pod created a team storyteller framework for project teams to give interviews and provide updates on their project's progress.

The ultimate goal is effective "storytelling for scientists," giving STEM and business students the tools and platform they needed to effectively communicate their research.

Fall 23' Born Global is working with the COM's AdLab program to further develop our brand identity and social media strategy.



left: graphics designed by BU COM interns; *right:* Millie with Dr. Samaha and other interns at Isabella Stewart Gardner Museum event

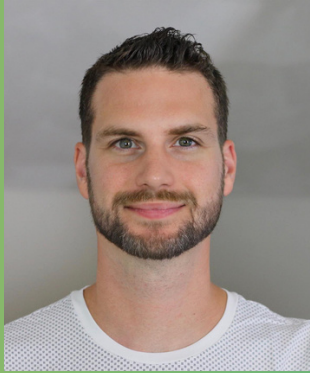
"My internship experience at Born Global has significantly shaped and refined my future career goals. Witnessing the impactful intersection of environmental initiatives with technology and social change has sparked a strong interest in pursuing roles within the nonprofit environmental sector that also involve business and public relations components."



MILLIE BENKERT (COM '24)

Public Relations Senior, Transfer Student from Colorado College
Communications Intern 2023

Expert Mentorship



"I take pride in the pivotal role I played in educating these young minds on the art of presenting themselves effectively in the virtual sphere, encompassing technical prowess and effective communication."

EVAN MARTIN, MENTOR 2021

Communication Mentor and Audio Visual Specialist

The Communications Pod (COM Pod) was started in Spring 2023 to better integrate strategic communication and marketing efforts directly into each project. Interns researched topics alongside their interdisciplinary teammates and acted as the team's public affairs and public relations strategist.

Born Global brought in professional mentors, like Evan Martin, who guided students in creating explanatory media for high level science and business projects such as the Biohub seen in the video below.



Video: a tour of the Fitchburg biomass site and interview with Dr. Samaha, filmed and edited by Evan Martin. [Click here to watch.](#)



"As an intern at Born Global, I've seen an improvement in my creative design skills and being challenged with creating video, broadcasting, and social media content for the Alchemist Garden project. I am grateful to be a part of a great community of people who value environmental sustainability and inspire positive change."



MARY SHEEDY (COM'24)

Media Science Senior
Communication Intern at Born Global 2023

Mary began interning with Born Global during the summer. This was her first major-related professional experience. Fall 23 she will receive credit for the COM internship elective course.



Mary worked on our Alchemist Garden Transmedia project with an international team of students from USC and a cohort of South African women animators and botanists to develop a master storyboard about our heroine Merlene and her adventures around our world as Biomes not Borders.

Mary continues exploring and researching the branding and business components of Alchemist Garden with COM's AdLab, students from the TV and Film program, and interns from Massachusetts College of Art and Design (Mass Art).



Pardee School of
Global Studies

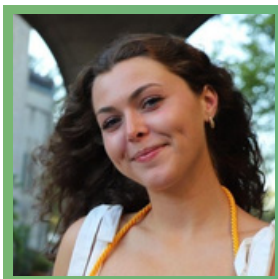
Touching Lives

The Impossible Lebanon Challenge was launched in the Summer of 2020, during the height of the COVID-19 pandemic, in an effort to provide Lebanese high school students with an opportunity to become social, environmental, and economic changemakers in their own communities.

“I got into biomimicry during the 2020 Impossible Lebanon challenge, which sought to find sustainable solutions for the Lebanese crisis. After winning with my project on Waste-to-Energy technology, I continued learning in an internship with Born Global. I then launched Biominds, my school’s first Biomimicry club, focused on empowering youth through the spreading of Biomimicry.”

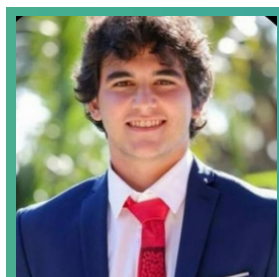
- Ghassan Abboud

Ghassan’s TEDx Youth talk: <https://youtu.be/a1mVY-cMGmw?feature=shared>



ERIN REDA (PARDEE'22)

Brand Associate at Nibi Mtk
Social Impact and Education intern at Born Global
2020-2022



GHASSAN ABOUD (EPFL '26)

Impossible Lebanon Winner
Biomimicry and Innovation
TEDx talk Biomimicry

International Projects

Starting in May 2019, Born Global partner organization The Other Dada began planting dense native fast-growing forests throughout the city of Beirut.

These forests eventually became maintenance free within 3 years. The Other Dada was awarded the D&AD Future Impact award and the iF Social Impact Prize, for their project "Beirut's RiverLESS Forest" where they restored the forest ecosystem by planting 5,800 native trees & shrubs in 2,200sqm of degraded land near Beirut's most polluted river.



Above: volunteers plant saplings at the RiverLESS Forest, Beirut Lebanon

In Summer 2023, Born Global interns conducted a genius of biome (GOB), environmental policy analysis, and stakeholder analysis on the RiverLESS River on-line in conjunction with an on the ground team in Lebanon.

"I am really happy to have learned so much more about sustainability from the perspective of biomimicry. This knowledge will be incredibly transferable into my career."



AVA RHEEVE (PARDEE'25)
International Relations junior
Stakeholder Analysis intern 2023

Migration as Hospitality



“The lively engagement of the students was palpable and inspiring... interns were connecting insights with past lectures and topics, pushing me to be more relevant to their exploration. Clearly the interns were learning a ton, but working with Born Global also inspired me, as lecturer, to a better understanding of my own research.”

CARRIE PRESTON (KIL)

Associate Director of the Center on Forced Displacement
Humanities Mentor

Born Global has been working with Professor Zaman since 2019 resulting in a collaboration for in-person internships in Beirut in conjunction with AUB. Travel restrictions forced the program online this summer, leading student interns to develop a Stakeholder Analysis tool for the evaluation of the Riverless River project in Beirut. Online lectures were held by Dr. Lori, Dr. Preston, and Dr. Scaramelli on topics that ranged from Migration, Law, Art and Prejudice, and Migration in the Mediterranean.



NOORA LORI (PARDEE)

Associate Professor of International Relations
Co-director of Initiative on Forced Migration and Human Trafficking



MUHAMMAD ZAMAN (ENG)

Vice Chair, Biomedical Engineering Dept
Director of Center on Forced Displacement



CATERINA SCARAMELLI (CAS)

Professor of Anthropology
Earth and Environment Faculty



BORN GLOBAL

Ecology • Education •
Employment